

Enodis UK Food Service Group

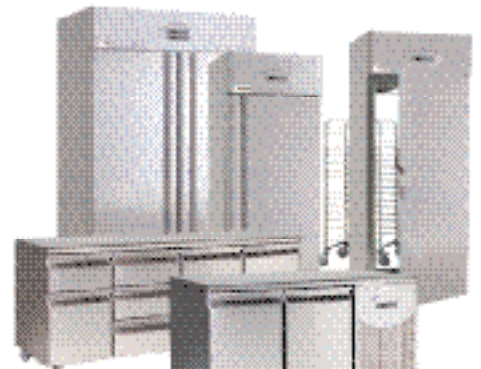
Enodis Distribution Hayes office: 4E Swallowfield Way, Hayes, Middlesex UB3 1DQ

Viscount Sheffield office: Provincial Park, Nether Lane, Ecclesfield, Sheffield, South Yorkshire S35 9ZX

Merychef Ltd: Station Road West, Ash Vale, Aldershot, Hampshire GU12 5XA

Group tel: 0845 370 4888 www.enodisuk.com

Product brochure



Refrigerators and freezers



Chefs' Preparation Counters



Merchandisers



Welcome

Sadia Refrigeration, long established and recognised for the highest quality in commercial refrigeration introduces the all new **Delfield Sadia Refrigeration** range of products. Under the new brand name an extensive range of products is offered to meet all operational requirements and budgets.



The new range has been designed with the caterer and Chef in mind combining performance efficiency and aesthetics and is constructed to meet the needs of the busiest kitchen or outlet operating in the most demanding of environments. **Delfield Sadia Refrigeration** offers an extensive and stylish range of stainless steel refrigerated products suitable for all applications from storage through to food preparation and merchandising.

Supplied from its modern manufacturing and distribution facility in Sheffield utilising the latest production technology and processes Viscount is supported by a skilled and committed workforce and is part of Enodis plc a world leader in providing foodservice equipment and solutions. By selecting Delfield Sadia Refrigeration, customers are certain of the best equipment for their operation supported throughout the product life. All equipment is

manufactured to ISO9001 quality standards and carries the CE mark.



We would encourage you to visit our facility in Sheffield "the steel city" where the full range can be seen in our showroom and live kitchen and demonstrated by our equipment specialists. You can also see other equipment from the Viscount and Enodis range and are able to discuss the right solution for your application or menu. These facilities are also available to you for staff training.

Overview of Delfield Sadia Refrigeration

Welcome to the Delfield Sadia Refrigeration offering; an outstanding range of products from the Viscount portfolio.

If you do not see the product you are looking for please do not hesitate to contact one of the Viscount sales team who will be more than able to find a solution.

The Delfield Sadia Refrigeration product range offers Solutions to meet caterers' needs with its Premium range of Refrigerators, Freezers and Display equipment.

Contents	Page No.
Delfield Sadia <i>Standard</i> Standard offering of refrigerated products	4
Delfield Sadia <i>Plus</i> Premium range of refrigerated products	10
Delfield Sadia <i>Select</i> Select range of retail counters and merchandising display units	20

Warranty

The full range of Delfield Sadia Refrigeration products is supported with a comprehensive **TWO** year parts and labour warranty (subject to Viscount's Warranty Policy and Service Requirements by trained Viscount Service Agents).

Delivery Details

Standard delivery is an inclusive free service. Deliveries are planned over a three day period and may be delivered on any one of the three days following despatch. Timed deliveries are available and will attract a suitable charge.

(For full details please contact the Viscount Sales Office on 0114 257 4550)

Standard Features (on all models, except RS10500)

- 304 stainless steel finish on all exposed surfaces
- CFC free fire retardant polyurethane foam & CFC free refrigerant
- Castors
- All equipment rated to work in high ambient temperature





Delfield

Sadia Refrigeration

STANDARD



RS10100U-R

Refrigerator

RS10100U-F

Freezer

Undercounter

- Dimensions: 600W x 600D x 850H
- Capacity: 100 litres
- Electronic control
- 2 shelves as standard
- Removable door gasket
- Supplied on castors



RS10150U-R

Refrigerator

RS10150U-F

Freezer

Undercounter

- Dimensions: 600W x 700D x 850H
- Capacity: 150 litres
- Electronic control
- 2 shelves as standard
- Removable door gasket
- Reversible door (on site application)
- Supplied on castors



RS10400-X

Refrigerator

Wet Fish

Single Door Upright

- Dimensions: 600W x 600D x 1900H
- Capacity 350 litres
- Space-saving footprint
- Electronic control
- Static agitator
- 5 trays 480W x 410D x 140H
- Reversible doors (on site application)
- Removable door gasket
- Supplied on castors



RS10550-R

Refrigerator

RS10550-F

Freezer

Economic Upright

- Dimensions: 700W x 850D x 1970H
- Capacity: 490 litres
- Non Gastronorm
- Electronic control
- 4 shelves, with clips, as standard
- Reversible doors (on site application)
- Removable door gasket
- Supplied on castors
- Finish: aluminium to internal / external walls & ceiling

Model	Temp °c	Temp Capability	Capacity(litres)	Watts	Dimensions	Packaging	Weight
RS10100U-R	+1 / +4	-2/+8	100	217	600 x 600 x 850	700 x 650 x 950	75kg
RS10100U-F	-18 / -21	-18 / -21	100	279	600 x 600 x 850	700 x 650 x 950	75kg
RS10150U-R	+1 / +4	-2/+8	150	217	600 x 700 x 850	700 x 750 x 950	55kg
RS10150U-F	-18 / -21	-18 / -21	150	279	600 x 700 x 850	700 x 750 x 950	80kg
RS10400-X	0 / -2	-2/+8	350	261	600 x 600 x 1900	630 x 630 x 1920	95kg
RS10550-R	+1 / +4	-2/+8	490	340	700 x 850 x 1970	750 x 850 x 2070	128kg
RS10550-F	-18 / -21	-18 / -21	490	620	700 x 850 x 1970	750 x 850 x 2070	130kg



Delfield

Sadia Refrigeration

STANDARD



RS10350-R

Refrigerator

RS10350-F

Freezer

Single Door Upright

- Dimensions: 600W x 600D x 1900H
- Capacity: 350 litres
- Non Gastronorm
- Space-saving footprint
- Electronic control
- 4 shelves as standard
- Reversible doors (on site application)
- Removable door gasket
- Supplied on castors



RS10800-R

Refrigerator

RS10800-F

Freezer

Double Door Upright

- Dimensions: 1200W x 600D x 1900H
- Capacity: 800 litres
- Non Gastronorm
- Space-saving footprint
- Electronic control
- 8 shelves as standard
- Reversible doors (on site application)
- Removable door gasket
- Supplied on castors



RS10700-R

Refrigerator

RS10700-F

Freezer

Single Door Upright

- Dimensions: 700W x 780D x 2050H
- Capacity: 700 litres
- 2/1 Gastronorm
- Electronic control
- Anti-tilt tray slides
- 4 shelves as standard
- Reversible doors (on site application)
- Removable door gasket
- Supplied on castors



RS11400-R

Refrigerator

RS11400-F

Freezer

Double Door Upright

- Dimensions: 1400W x 780D x 2050H
- Capacity: 1400 litres
- 2/1 Gastronorm
- Electronic control
- Anti-tilt tray slides
- 8 shelves as standard
- Reversible doors (on site application)
- Removable door gasket
- Supplied on castors

Model	Temp °c	Temp Capability	Capacity(litres)	Watts	Dimensions	Packaging	Weight
RS10350-R	+1 / +4	-2/+8	350	260	600 x 600 x 1900	630 x 630 x 1920	75kg
RS10350-F	-18 / -21	-18 / -21	350	350	600 x 600 x 1900	630 x 630 x 1920	90kg
RS10800-R	+1 / +4	-2/+8	800	330	1200 x 600 x 1900	1240 x 640 x 1920	120kg
RS10800-F	-18 / -21	-18 / -21	800	460	1200 x 600 x 1900	1240 x 640 x 1920	140kg
RS10700-R	+1 / +4	-2/+8	700	320	700 x 780 x 2050	740 x 820 x 2100	120kg
RS10700-F	-18 / -21	-18 / -21	700	573	700 x 780 x 2050	740 x 820 x 2100	130kg
RS11400-R	+1 / +4	-2/+8	1400	420	1400 x 780 x 2050	1440 x 820 x 2100	190kg
RS11400-F	-18 / -21	-18 / -21	1400	692	1400 x 780 x 2050	1440 x 820 x 2100	200kg



Delfield

Sadia Refrigeration

STANDARD



RS10260C-R

Refrigerator

RS10260C-F

Freezer

Two Door Chefs Counter

- Dimensions: 1400W x 700D x 850H (Option: 900H version available)
- Capacity: 260 litres
- 1/1 Gastronorm
- 50mm splashback fitted as standard
- Electronic control
- Anti-tilt tray slides
- 2 shelves per door as standard
- Removable door gasket
- Supplied on castors



RS10400C-R

Refrigerator

RS10400C-F

Freezer

Three Door Chefs Counter

- Dimensions: 1865W x 700D x 850H (Option: 900H version available)
- Capacity: 400 litres
- 1/1 Gastronorm
- 50mm splashback fitted as standard
- Electronic control
- Anti-tilt tray slides
- 2 shelves per door as standard
- Removable door gasket
- Supplied on castors



RS10550C-R

Refrigerator

RS10550C-F

Freezer

Four Door Chefs Counter

- Dimensions: 2330W x 700D x 850H (Option: 900H version available)
- Capacity: 550 litres
- 1/1 Gastronorm
- 50mm splashback fitted as standard
- Electronic control
- Anti-tilt tray slides
- 2 shelves per door as standard
- Removable door gasket
- Supplied on castors

Model	Temp °c	Temp Capability	Capacity(litres)	Watts	Dimensions	Packaging	Weight
RS10260C-R	+1 / +4	-2/+8	260	260	1400 x 700 x 850	1440 x 740 x 920	115kg
RS10260C-F	-18 / -21	-18 / -21	260	398	1400 x 700 x 850	1440 x 740 x 920	115kg
RS10400C-R	+1 / +4	-2/+8	400	320	1865 x 700 x 850	1900 x 740 x 920	160kg
RS10400C-F	-18 / -21	-18 / -21	400	475	1865 x 700 x 850	1900 x 740 x 920	160kg
RS10550C-R	+1 / +4	-2/+8	550	420	2330 x 700 x 850	2370 x 740 x 920	190kg
RS10550C-F	-18 / -21	-18 / -21	500	530	2330 x 700 x 850	2370 x 740 x 920	190kg



Delfield

Sadia Refrigeration

STANDARD



RS10T03

Blast Chiller / Freezer

- Dimensions: 600W x 600D x 400H
- Capacity: 7kg Chilling / 5kg Freezing
- To accept 3 off 2/3 GN pans (not supplied)
- Tabletop version
- Single phase supply



RS10T05

Blast Chiller / Freezer

- Dimensions: 800W x 700D x 890H
- Capacity: 14kg chilling / 10kg freezing
- To accept 5 off 1/1 GN pans (not supplied)
- Single phase supply
- Supplied on castors



RS10T14

Blast Chiller / Freezer

- Dimensions: 800W x 700D x 1855H
- Capacity : 65kg chilling / 50kg freezing
- To accept 14 off 1/1 GN pans (not supplied)
- Supplied on castors
- Three phase supply

Also available as RS10T14S

- 25 Amp single phase supply
- 40kg chilling 30kg freezing

Model	Capacity	Watts	Dimensions	Packaging	Weight
RS10T03	7kg chill / 5kg freeze	630	600 x 600 x 400	630 x 630 x 500	51kg
RS10T05	14kg chill / 10kg freeze	1200	800 x 700 x 890	830 x 730 x 990	116kg
RS10T14	65kg chill / 50kg freeze	3500	800 x 700 x 1855	830 x 730 x 1955	256kg
RS10T14S	40kg Chill / 30kg freeze	3500	800 x 700 x 1855	830 x 730 x 1955	256kg



Delfield

Sadia Refrigeration

PLUS



RP10470-R

Refrigerator

RP10470-F

Freezer

Single Door Upright

- Dimensions: 580W x 800D x 2090H
- Capacity: 470 litres
- 1/1 Gastronorm
- Electronic control
- 4 shelves as standard
- Removable door gasket
- Reversible door (on site application)
- CFC free 60mm insulation
- Supplied on castors
- Glass door option available



RP10700-R

Refrigerator

RP10700-F

Freezer

Single Door Upright

- Dimensions: 720W x 800D x 2090H
- Capacity: 700 litres
- 2/1 Gastronorm
- Electronic control
- 4 shelves as standard
- Removable door gasket
- Reversible door (on site application)
- CFC free 60mm insulation
- Supplied on castors
- Glass door option available



RP10700-RF

Dual Temperature
Refrigerator & Freezer

Single Door Upright
Stable Doors

- Dimensions: 720W x 800D x 2090H
- Capacity: 700 litres
- 2/1 Gastronorm
- Stable doors
- Electronic control
- 4 shelves as standard
- Removable door gasket
- Reversible door (on site application)
- CFC free 60mm insulation
- Supplied on castors
- Glass door option available



RP10700-R/2

Refrigerator

RP10700-F/2

Freezer

Single Door Upright
Stable Doors

- Dimensions: 720W x 800D x 2090W
- Capacity: 700 litres
- 2/1 Gastronorm
- Stable doors
- Electronic Control
- 4 shelves as standard
- Removable door gasket
- Reversible door (on site application)
- CFC free 60mm insulation
- Supplied on castors
- Glass door option available

Model	Temp °c	Temp Capability	Capacity(litres)	Watts	Dimensions	Packaging	Weight
RP10470-R	+1 / +4	-2/+8	470	280	580 x 800 x 2090	620 x 800 x 2150	100kg
RP10470-F	-18 / -21	-18 / -21	470	421	580 x 800 x 2090	620 x 800 x 2150	100kg
RP10700-R	+1 / +4	-2/+8	700	320	720 x 800 x 2090	760 x 840 x 2150	120kg
RP10700-F	-18 / -21	-18 / -21	700	573	720 x 800 x 2090	760 x 840 x 2150	130kg
RP10700-RF	+1/+4/-18/-21	-2/+8/-18 / -21	700	322/460	720 x 800 x 2090	760 x 840 x 2150	160kg
RP10700-R/2	+1 / +4	-2/+8	700	382	720 x 800 x 2090	760 x 840 x 2150	130kg
RP10700-F/2	-18 / -21	-18 / -21	700	544	720 x 800 x 2090	760 x 840 x 2150	140kg



Delfield

Sadia Refrigeration

PLUS



RP10700-R/PT

Refrigerator

RP10700-F/PT

Freezer

Single Door
Pass Through

- Dimensions: 720W x 800D x 2090H
- Capacity: 700 litres
- 2/1 Gastronorm
- Electronic control
- 4 shelves as standard
- Removable door gasket
- Reversible door (on site application)
- CFC free 60mm insulation
- Supplied on castors



RP11015-R/RI

Refrigerator

Roll In

- Dimensions: 860W x 960D x 2250H
- Capacity: 1015 litres
- 2/1 Gastronorm trolley (not supplied)
- Electronic control
- Removable door gasket
- CFC free 80mm insulation
- Supplied on castors



RP11015-R/RIPT

Refrigerator

Roll in
Pass Through

- Dimensions: 860W x 960D x 2250H
- Capacity: 1015 litres
- 2/1 Gastronorm trolley (not supplied)
- Electronic control
- Removable door gasket
- CFC free 80mm insulation
- Supplied on castors

Model	Temp °c	Temp Capability	Capacity(litres)	Watts	Dimensions	Packaging	Weight
RP10700-R/PT	+1 / +4	-2/+8	700	349	720 x 800 x 2090	760 x 840 x 2150	120kg
RP10700-F/PT	-18 / -21	-18 / -21	700	617	720 x 800 x 2090	760 x 840 x 2150	120kg
RP11015-R/RI	+1 / +4	-2/+8	1015	405	860 x 960 x 2250	900 x 1100 x 2400	199kg
RP11015-R/RIPT	+1 / +4	-2/+8	1015	405	860 x 960 x 2250	900 x 1100 x 2400	199kg



Delfield

Sadia Refrigeration

PLUS



RP11050-R

Refrigerator

RP11050-F

Freezer

Double Door Upright

- Dimensions: 1160W x 800D x 2090H
- Capacity: 1050 litres
- 1/1 Gastronorm
- 8 shelves as standard
- Electronic control
- Removable door Gasket
- Reversible door (on site application)
- CFC free 60mm insulation
- Supplied on castors
- Glass door option available



RP11400-R

Refrigerator

RP11400-F

Freezer

Double Door Upright

- Dimensions: 1440W x 800D x 2090H
- Capacity: 1400 litres
- 2/1 Gastronorm
- 8 shelves as standard
- Electronic control
- Removable door gasket
- Reversible door (on site application)
- CFC free 60mm insulation
- Supplied on castors
- Glass door option available



RP11400-R/3

Refrigerator

RP11400-F/3

Freezer

Double Door Upright
Combination Doors

- Dimensions: 1440W x 800D x 2090H
- Capacity: 1400 litres
- One full height & two half doors
- 2/1 Gastronorm
- 8 shelves as standard
- Electronic control
- Removable door gasket
- Reversible door (on site application)
- CFC free 60mm insulation
- Supplied on castors
- Glass door option available



RP11400-R/4

Refrigerator

RP11400-F/4

Freezer

Double Door Upright
Combination Doors

- Dimensions: 1440W x 800D x 2090H
- Capacity: 1400 litres
- Four half doors
- 2/1 Gastronorm
- 8 shelves as standard
- Electronic control
- Removable door gasket
- Reversible door (on site application)
- CFC free 60mm insulation
- Supplied on castors
- Glass door option available

Model	Temp °c	Temp Capability	Capacity(litres)	Watts	Dimensions	Packaging	Weight
RP11050-R	+1 / +4	-2/+8	1050	395	1160 x 800 x 2090	620 x 800 x 2100	100kg
RP11050-F	-18 / -21	-18 / -21	1050	569	1160 x 800 x 2090	620 x 800 x 2100	110kg
RP11400-R	+1 / +4	-2/+8	1400	405	1440 x 800 x 2090	760 x 840 x 2150	120kg
RP11400-F	-18 / -21	-18 / -21	1400	780	1440 x 800 x 2090	760 x 840 x 2150	130kg
RP11400-R/3	+1 / +4	-2/+8	1400	405	1440 x 800 x 2090	760 x 840 x 2150	200kg
RP11400-F/3	-18 / -21	-18 / -21	1400	780	1440 x 800 x 2090	760 x 840 x 2150	210kg
RP11400-R/4	+1 / +4	-2/+8	1400	405	1440 x 800 x 2090	760 x 840 x 2150	210kg
RP11400-F/4	-18 / -21	-18 / -21	1400	780	1440 x 800 x 2090	760 x 840 x 2150	220kg



RP11400-R/F
Refrigerator & Freezer
Double Door Upright

- Dimensions: 1440W x 800D x 2090H
- Capacity: 1400 litres
- Dual temperature
- 2/1 Gastronorm
- 8 shelves as standard
- CFC free 60mm insulation
- Supplied on castors
- Glass door option available



RP11400-RR/3 Refrigerator
RP11400-RF/3 Refrigerator & Freezer
RP11400-FF/3 Freezer
Double Door Upright
Combination Doors

- Dimensions: 1440W x 800D x 2090H
- Capacity: 1400 litres
- 1 full height door & 2 half doors
- 2/1 Gastronorm
- 8 shelves as standard
- CFC free 60mm insulation
- Supplied on castors
- Glass door option available



RP11400-R/PT Refrigerator
RP11400-F/PT Freezer
Double Door Upright
Pass Through

- Dimensions: 1440W x 800D x 2090H
- Capacity: 1400 litres
- 2 full height doors
- 2/1 Gastronorm
- 8 shelves as standard
- CFC free 60mm insulation
- Supplied on castors



RP12240-R/RI Refrigerator
Double Door Upright
Roll-In

- Dimensions: 1700W x 960D x 2250H
- Capacity: 2240 litres
- 2 full height doors
- 2/1 Gastronorm Trolley (not included)
- CFC free 80mm insulation



RP12240-R/RIPT Refrigerator
Double Door Upright
Roll-In / Pass Through

- Dimensions: 1700W x 960D x 2250H
- Capacity: 2240 litres
- 4 full height doors
- 2/1 Gastronorm Trolley (not included)
- CFC free 80mm insulation

Model	Temp °c	Temp Capability	Capacity(litres)	Watts	Dimensions	Packaging	Weight
RP11400-R/F	+1/+4/-18/-21	-2/+8/-18/-21	700/700	320/460	1440 x 800 x 2090	1480 x 840 x 2150	225kg
RP11400-RR/3	+1 / +4	-2/+8	1050/350	405/322	1440 x 800 x 2090	1480 x 840 x 2150	240kg
RP11400-FF/3	-18 / -21	-18 / -21	1050/350	573/573	1440 x 800 x 2090	1480 x 840 x 2150	245kg
RP11400-RF/3	+1/+4/-18/-21	-2/+8/-18/-21	1050/350	405/460	1440 x 800 x 2090	1480 x 840 x 2150	245kg
RP11400-R/PT	+1 / +4	-2/+8	1400	371	1440 x 800 x 2090	1480 x 840 x 2150	190kg
RP11400-F/PT	-18 / -21	-18 / -21	1400	758	1440 x 800 x 2090	1480 x 840 x 2150	200kg
RP12240-R/RI	+1 / +4	-2/+8	2240	776	1700 x 960 x 2250	1740 x 1100 x 2400	290kg
RP12240-R/RIPT	+1 / +4	-2/+8	2240	776	1700 x 960 x 2250	1740 x 1100 x 2400	290kg



Delfield

Sadia Refrigeration

PLUS



RP10260C-R

Refrigerator

RP10260C-F

Freezer

Two Door Chefs Counter

- Dimensions: 1460W x 700D x 850H (available as 900H version)
- Capacity: 260 litres
- 2 shelves per door (as standard)
- 1/1 Gastronorm
- Electronic controller
- Anti tilt trayslides
- Removable door gasket
- CFC free 60mm insulation
- Supplied on castors
- Drawer options available



RP10400C-R

Refrigerator

RP10400C-F

Freezer

Three Door Chefs Counter

- 1945W x 700D x 850H (available as 900H version)
- Capacity: 400 litres
- 2 shelves per door as standard
- 1/1 Gastronorm
- Electronic controller
- Anti tilt trayslides
- Removable door gasket
- CFC free 60mm insulation
- Supplied on castors
- Drawer options available



RP10550C-R

Refrigerator

RP10550C-F

Freezer

Four Door Chefs Counter

- Dimensions: 2430W x 700D x 850H (available as 900H version)
- Capacity: 550 litres
- 2 shelves per door as standard
- 1/1 Gastronorm
- Electronic controller
- Anti tilt trayslides
- Removable door gasket
- CFC free 60mm insulation
- Supplied on castors
- Drawer options available

Model	Temp °c	Temp Capability	Capacity(litres)	Watts	Dimensions	Packaging	Weight
RP10260C-R	+1 / +4	-2/+8	260	260	1460 x 700 x 850	1500 x 740 x 910	130kg
RP10260C-F	-18 / -21	-18 / -21	260	370	1460 x 700 x 850	1500 x 740 x 910	125kg
RP10400C-R	+1 / +4	-2/+8	400	320	1945 x 700 x 850	1980 x 740 x 910	160kg
RP10400C-F	-18 / -21	-18 / -21	400	482	1945 x 700 x 850	1980 x 740 x 910	170kg
RP10550C-R	+1 / +4	-2/+8	550	420	2430 x 700 x 850	2470 x 740 x 910	190kg
RP10550C-F	-18 / -21	-18 / -21	550	482	2430 x 700 x 850	2470 x 740 x 910	200kg



Delfield

Sadia Refrigeration

PLUS



RP10420C-RP

Refrigerator

Three Door Chefs Counter
Raised Top

- Dimensions: 1945W x 700D x 1000H
- Capacity: 420 litres
- 2 shelves per door as standard
- 1/1 Gastronorm
- Electronic controller
- Anti tilt trayslides
- Removable door gasket
- Reversible door (on site application)
- CFC free 60mm insulation
- Supplied on castors
- Drawer options available



RP10115C-R

Refrigerator

RP10115C-F

Freezer

Two Door
Low Level Broiler Table

- Dimensions: 1400W x 600D x 600H
- Capacity: 115 litres
- 2 shelves per door as standard
- Electronic controller
- Removable door gasket
- CFC free insulation
- Supplied on castors
- Drawer options available



RP10180C-R

Refrigerator

RP10180C-F

Freezer

Three Door
Low Level Broiler Table

- Dimensions: 1865W x 600D x 600H
- Capacity: 180 litres
- 2 shelves per door as standard
- Electronic controller
- Removable door gasket
- CFC free insulation
- Supplied on castors
- Drawer options available

Model	Temp °c	Temp Capability	Capacity(litres)	Watts	Dimensions	Packaging	Weight
RP10420C-RP	+1 / +4	-2/+8	420	420	1945 x 700 x 1000	1980 x 740 x 1040	190kg
RP10115C-R	+1 / +4	-2/+8	115	260	1400 x 600 x 600	1440 x 740 x 700	65kg
RP10115C-F	-18 / -21	-18 / -21	115	398	1400 x 600 x 600	1440 x 740 x 700	75kg
RP10180C-R	+1 / +4	-2/+8	180	320	1865 x 600 x 600	1900 x 740 x 700	86kg
RP10180C-F	-18 / -21	-18 / -21	180	415	1865 x 600 x 600	1900 x 740 x 700	85kg



Delfield

Sadia Refrigeration

SELECT



RP10260C-SAL

Refrigerator

Two Door Counter
With Saladette

- Dimensions: 1460W x 700D x 890H
- Capacity: 260 litres
- 2 shelves per door as standard
- 1/1 Gastronorm
- Electronic controller
- Removable door gasket
- CFC free 60mm insulation
- Supplied on castors
- Drawer options available

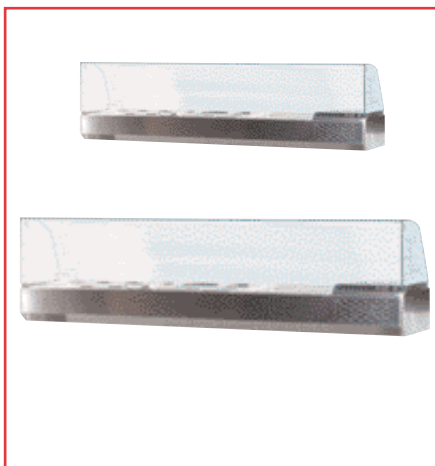


RP10400C-SAL

Refrigerator

Three Door Counter
With Saladette

- Dimensions: 1945W x 700D x 890H
- Capacity: 400 litres
- 2 shelves per door as standard
- 1/1 Gastronorm
- Electronic controller
- Removable door gasket
- CFC free 60mm insulation
- Supplied on castors
- Drawer options available



RP10166G-RT

Refrigerator Version

RP10223G-RT

Refrigerator Version

Curved Glass
Top Stand

- Dimensions: 1660W x 380D x 470H
- Capacity: 2 x GN 1/1+1 GN2/8
- Dimensions: 2230W x 380D x 470H
- Capacity: 3 x GN 1/1 + GN 1/3

Model	Temp °c	Capacity (litres)	Watts	Dimensions	Packaging	Weight
PR10260C-/SAL	+1 / +4	260	220	1460 x 700 x 890	1500 x 740 x 950	125kg
PR10400C-/SAL	+1 / +4	400	300	1945 x 700 x 890	1980 x 740 x 950	155kg
RP10166G-RT	+1 / +4	2 x GN 1/1+ 1 x GN2/8	66	1660 x 380 x 470	1700 x 420 x 550	69kg
RP10223G-RT	+1 / +4	3 x GN1/1 + 1 x GN1/3	92	2230 x 380 x 470	2270 x 420 x 550	75kg



Delfield

Sadia Refrigeration

SELECT



RP10176C-RMD

Refrigerator

One Door Counter + 7 neutral drawers
Marble Top

- Dimensions: 1660W x 800D x 945H
- Capacity: 176 litres
- 7 neutral drawers
- 11 plastic trays 400 x 600
- Neutral drawer over compressor
- 4 pairs 'L' shaped glides
- CFC free 60mm insulation
- Supplied on castors



RP10340C-RM

Refrigerator

Two Door Counter
Marble Top

- Dimensions: 1660W x 800D x 945H
- Capacity: 340 litres
- 8 plastic trays 400 x 600
- Neutral drawer over compressor
- 4 pairs 'L' shaped glides
- CFC free 60mm insulation
- Supplied on castors
- Drawer options available



RP10340C-RMD

Refrigerator

Two Door Counter + 7 neutral drawers
Marble Top

- Dimensions: 2230W x 800D x 945H
- Capacity: 340 litres
- 7 neutral drawers
- 15 plastic trays 400 x 600
- Neutral drawer over compressor
- 8 pairs 'L' shaped glides
- CFC free 60mm insulation
- Supplied on castors

Model	Temp °c	Capacity (litres)	Watts	Dimensions	Packaging	Weight
RP10176C-RMD	+1 / +4	176	217	1660 x 800 x 945	1700 x 840 x 1000	300kg
RP10340C-RM	+1 / +4	340	320	1660 x 800 x 945	1700 x 840 x 1000	300kg
RP10340C-RMD	+1 / +4	340	320	2230 x 800 x 945	2270 x 840 x 1000	450kg



Delfield

Sadia Refrigeration

SELECT



RP10260C-RS

Refrigerator

Two Door
Saladette Counter

- Dimensions: 930W x 700D x 910H
- Capacity: 260 litres
- 4 shelves as standard
- 1/1 Gastronorm
- Gastronorm pans not supplied
- Night cover supplied
- CFC free insulation
- Supplied on castors
- Drawer options available



RP10400C-RS

Refrigerator

Three Door
Saladette Counter

- Dimensions: 1395W x 700D x 910H
- Capacity: 400 litres
- 6 shelves as standard
- 1/1 Gastronorm
- Gastronorm pans not supplied
- Night cover supplied
- CFC free insulation
- Supplied on castors
- Drawer options available



RP10400C-RSC

Refrigerator

Two Door
Saladette Counter
Sneeze Screen

- Dimensions: 1395W x 700D x 1350H
- Capacity: 400 litres
- 6 shelves as standard
- 1/1 Gastronorm
- Gastronorm pans not supplied
- CFC free 60mm insulation
- Supplied on castors
- Drawer options available

Model	Temp °c	Capacity (litres)	Watts	Dimensions	Packaging	Weight
RP10260C-RS	+1 / +4	260	220	930 x 700 x 910	970 x 740 x 970	90kg
RP10400C-RS	+1 / +4	400	300	1395 x 700 x 910	1440 x 740 x 970	125kg
RP10400C-RSC	+1 / +4	400	300	1395 x 700 x 1350	1440 x 740 x 1400	135kg



Delfield

Sadia Refrigeration

SELECT



AB1AMDCog900GB*

Assisted Serve

900 Ambient
Merchandising Display

- Dimensions: 900W x 750D x 1435H
- Capacity: 480 litres
- Three enclosed glass shelves
- Profiled glass sides
- Curved front glass
- Supplied on castors



AB1CHSCog900GB*

Self Serve

AB1REDCog900GB*

Assisted Serve

900 Chilled
Merchandising Display

- Dimensions: 900W x 750D x 1435H
- Capacity: 480 litres
- Operating temperature: +1°C-+5°C
- Ambient temperature: +35°C
- Three enclosed glass shelves
- Profiled glass sides
- Curved front glass to assisted serve unit
- Supplied on castors



AB1ARDCLH1300*

Assisted Serve

1300 Chilled / Ambient
Merchandising Display

- Dimensions: 1300W x 750D x 1435H
- Capacity: 690 litres
- Operating temperature: +1°C-+5°C
- Ambient temperature: +35°C
- Six enclosed glass shelves
- Profiled glass sides
- Curved front glass
- Supplied on castors

Model	Temp °c	Capacity (litres)	Watts	Dimensions	Packaging	Weight
AB1AMDCog900GB	Amb	480	32	900 x 750 x 1435	950 x 800 x 1560	130kg
AB1CHSCog900GB	+ 1 / + 4	480	1490	900 x 750 x 1435	950 x 800 x 1560	184kg
AB1REDCog900GB	+ 1 / + 4	480	1400	900 x 750 x 1435	950 x 800 x 1560	194kg
AB1ARDCLH1300	+ 1 / + 4/ Amb	690	1400	1300 x 750 x 1435	1350 x 800 x 1560	248kg

*Beech facia for illustration purposes only. Supplied with stainless steel facia as standard.

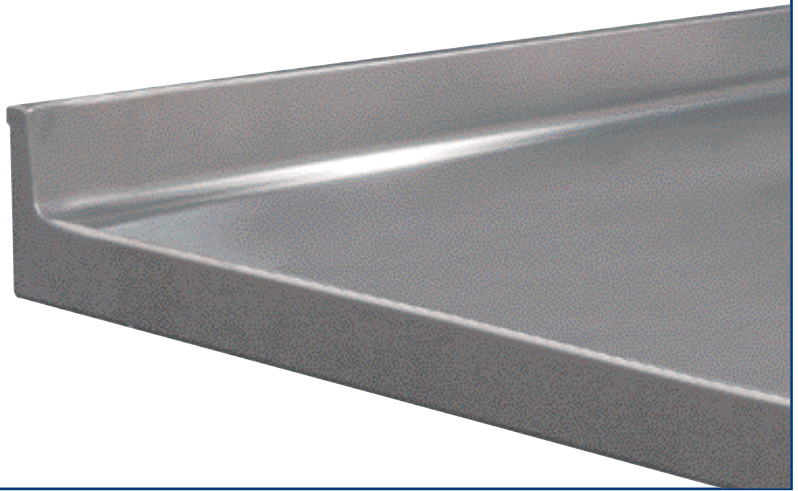


Delfield

Sadia Refrigeration

PLUS

Splashback Option Available



Options Available:

- 1/3 drawer with 2/3 drawer
- 3 off 1/3 drawers
- 2 off 1/2 drawers
- 50mm splashback



Remote Compressor Option Available



PAN CONFIGURATION

RP10166G-RT

1/3	1/3	1/3	1/3	1/6	1/6	2/6
				1/6	1/6	

RP10223G-RT

1/3	1/3	1/3	1/3	1/3	1/6	1/6	1/6	1/6	1/6
					1/6	1/6	1/6	1/6	1/6

RP10260C-SAL

RP10260C-RS

1/1	1/6	1/3
	1/6	1/3
	1/6	1/3

RP10400C-SAL

RP10400C-RS

RP10400C-RSC

1/1	1/3	1/6	1/6	1/3
	1/3	1/6	1/6	1/3
	1/3	1/6	1/6	1/3

RP10420C-RP

1/3	1/3	1/3	1/3	1/3		1/3	1/3	1/3	1/3	1/3
-----	-----	-----	-----	-----	--	-----	-----	-----	-----	-----